

# Lotus knows.

Smarter software for a Smarter Planet.

BP102

Adminblast 2010: Over 60 Tips in 60 Minutes!

Paul Mooney | Senior Architect, Bluewave



CREATED WITH LOTUS<sup>®</sup> SYMPHONY™

[lotusknows.com](http://lotusknows.com)



## About This Presentation

- Provides you with a brain dump of useful tips
- Presentation is self-contained
  - There is plenty to cover
  - All the information you need to implement these tips is in this presentation
- There are over 60 tips
  - Although some “tip pages” have more than one tip!
- If you have any trouble with a tip, email me at:  
[pmooney@pmooney.net](mailto:pmooney@pmooney.net)

## Where Did I Get These Tips?

- From my life as a consultant ...
- Forums
- [www.notes.net](http://www.notes.net)
- [www-142.ibm.com/software/sw-lotus/support](http://www-142.ibm.com/software/sw-lotus/support)
- Blogs
  - Just too many to mention!
  - [www.planetlotus.org](http://www.planetlotus.org)

## Right... what about the other Adminblast sessions?

- Go to [www.pmooney.net/resources](http://www.pmooney.net/resources)
- Many presentations there
- Different versions of this one
- Download away!
- The latest and the “must know” slides are repeated this year.

## HTTP Tips

## Tip #1: Setup global http settings

- Too many sites DON'T do this!
- Enable standardized settings on all your http sites
- Go to internet sites view



- Create and save the global web settings document



## Tip #2: Cache jpg images on your sites

- You can do this per site or using your global settings document.
- Set HTTP response headers
  - You can cache images, ccs files etc if they are static
  - Improves performance of websites
- Discuss this with your developers
  - Is it ok to cache these items on browsers?

Cache jpg

---

HTTP response headers

---

\*.jpg\*

---

200, 206

---

☐ Don't add header

☐ Add header only if application did not

☒ Always add header (override application's header)

☒ Specify as number of days

☐ Specify as date

---

Expires after 30 days

---

Name:	Value:	<input type="checkbox"/> Override
Name:	Value:	<input type="checkbox"/> Override
Name:	Value:	<input type="checkbox"/> Override

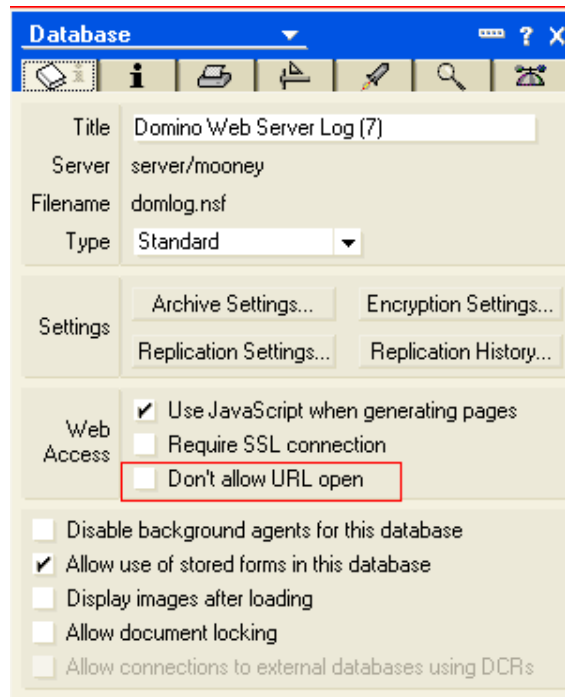
## Tip #3: HTTP and Internet Passwords

- HTTP password changes are cached on the server
- Can confuse users
  - At some point, both their old and new passwords work!
- HTTP\_PWD\_CHANGE\_CACHE\_HOURS=0
  - Set in the notes.ini file
  - Prevents both passwords from functioning
  - The moment the user changes his/her password, it is the only active password



## Tip #4: Restricting Web Access

- The database property, “Don’t allow URL open,” ensures a database will not be opened from a Web client
  - Restricts: `http://Host/Database.nsf/*` commands
  - Sends 500 Not Authorized error

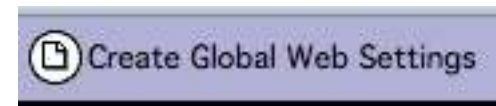


## Tip #5: Restricting Web Access (other way)

- Certain databases, you just don't want people to browse to
  - names.nsf for example
- Create a rule redirecting all requests to that URL to a HTML file
- You don't need Internet sites enabled
  - but i'm assuming you do



- Go to the internet sites view
- Create a global web settings document
- Give it a name and save it



## Tip #5: Restricting Web Access (other way)

- Open the global settings document and create a rule

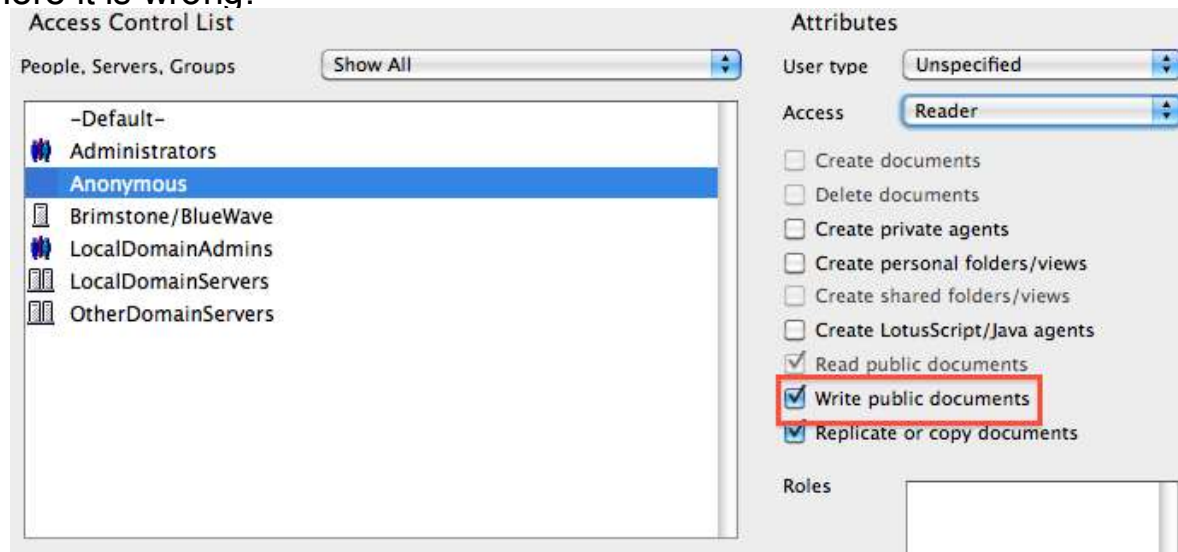


- Point all requests to the database to a html file you have written..



## Tip #6 - Domcfg.nsf

- Use it
- Amazingly useful for redirections, mappings and customised .nsf Error messages
- Check the ACL
  - Anonymous should have reader but NOT write public access
  - Here it is wrong!



## Tip #7 - Customising 404 errors for non .nsf files

- This is nice!
- What if someone browses for a html file on your webserver?
- Domcfg.nsf doesn't load custom errors
  - You get the basic 404 error message
- Write your own html error message!
  - Add this to notes.ini
  - HTTPMultiErrorPage=/error.html

## Tip #8: Setting iNotesLite as the default

- iNotesLite is the new black...
- Fantastic, fast interface
  - Not full functionality, but more than enough to work
- Want it to be the default for all users?
- iNotes\_WA\_DefaultUI=dwa\_lite
  - 8.0.1 and higher only

## Tip #9: Make SSL sites run faster

- Creating SSL keys for encryption for each session is processor expensive
  - Key generation is kinda hard ya know!
- Domino retains some of the calculation cache for the last 50 sessions
  - To speed up the key generation
- Enter `SSL_RESUMABLE_SESSIONS=0`
  - Domino retains unlimited amount of key caches
- Substantial improvement in performance
  - NO EFFECT ON SECURITY

## Tip #10: Setup Internet password lockouts

- A nice, easy method to secure your Lotus® Domino® http accounts
- Configured by policies and/or configuration document
  - Record number of tries ...

Internet Lockout

Mark for Delete/Unlock Delete Marked Items

Server Name	User Name	Locked Out	Failed Attempts	First Failure Time	Last Failure Time
/BlueWave					
	/BlueWave	No	1	20/05/2009 15:06:05	20/05/2009 15:06:05
	BlueWave	No	1	14/12/2009 09:57:09	14/12/2009 09:57:09
	Server/BlueWave	No	1	17/12/2009 12:28:28	17/12/2009 12:28:28
	er/BlueWav	No	1	20/05/2009 15:06:05	20/05/2009 15:06:05
	eWave	Yes	5	17/08/2009 14:58:26	19/08/2009 14:37:52
	er/BlueWave	No	1	04/12/2009 11:12:58	04/12/2009 11:12:58
	BlueWave	No	2	02/12/2009 14:52:47	02/12/2009 14:52:56
	/BlueWave	No	1	14/08/2009 11:22:21	14/08/2009 11:22:21

Basics Security Client Upgrade Router/SMTP MIME NOTES.INI S

Internet Lockout

Enforce Internet Password Lockout: ☐ Yes ☒ No

Log Settings: ☒ Lockouts ☒ Failures

Default Maximum Tries Allowed:

Default Lockout Expiration:

Default Maximum Tries Interval:



## Tip #11: Is your http security enabled

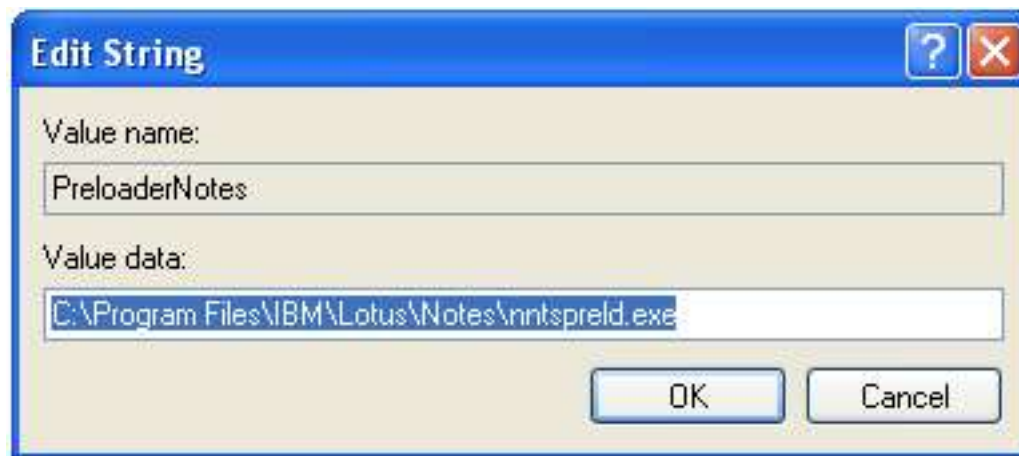
- Very common security hole
- By default the browser access to servers bypasses the server security section
  - Not a good thing
- Go to server document
- Ports / Internet Ports section
- Web section
- Set ENFORCE SERVER ACCESS SETTINGS TO “Yes”



## Performance Tips

## Tip #12 - Make the Lotus Notes 8 client go faster?

- YMMV
  - I tested it and did not see much improvement
- Have some of the Notes 8 code start when booting machine
- Regedit
  - Local Machine\Software\Microsoft\Windows\Current Version\Run
- Add new string value



## Tip #13: Another way

- Close Lotus Notes® fully (even restart before doing this)
- Open this directory
  - NotesProgramDirectory}\framework\rcp\eclipse\plugins\com.ibm.rcp.j2se.{Version}
- Look for the file jvm.properties
- Look for this line..
  - vmarg.Xmx=-Xmx256m
- Change the 256 to approx 1/2 your RAM available
- More memory used but significantly faster

## Tip #14 - Stop agents creating indexes

- Seen this before?
  - "Warning: Agent is performing full text operations on database '<name>' which is not full text indexed. This is extremely inefficient."
- This is BAD
  - Very inefficient on server
- Notes.ini FT\_FLY\_INDEX\_OFF=1
  - Stops the agent from occurring
  - Error returned on console "db not indexed"
  - Prevents agent but stops server performance hit!

## Tip #15: Making Server Availability Index work!

- The Server Availability Index is a mystery
  - If you want to understand it, go to/download the clustering session with Kathleen McGivney and myself
  - (bring a calculator)
- If you want it to cheat..
  - Type in SH AI on the Domino 7 console (or higher)
  - It will tell you what to set the SERVER\_TRANSINFO\_RANGE= value to in the ini file
  - Availability index will be more accurate now
- You have to check this frequently
- Base your calculations when server is busy

## Tip #16: Its all about the disks...

- Lotus Domino is very reliant on disk performance
- Know your arrays!
- Ensure if you are on a SAN that you have dedicated LUN and disks for Domino data directory
  - Make the SAN administrator promise!
- Domino is disk read intensive
  - More so then disk write intensive

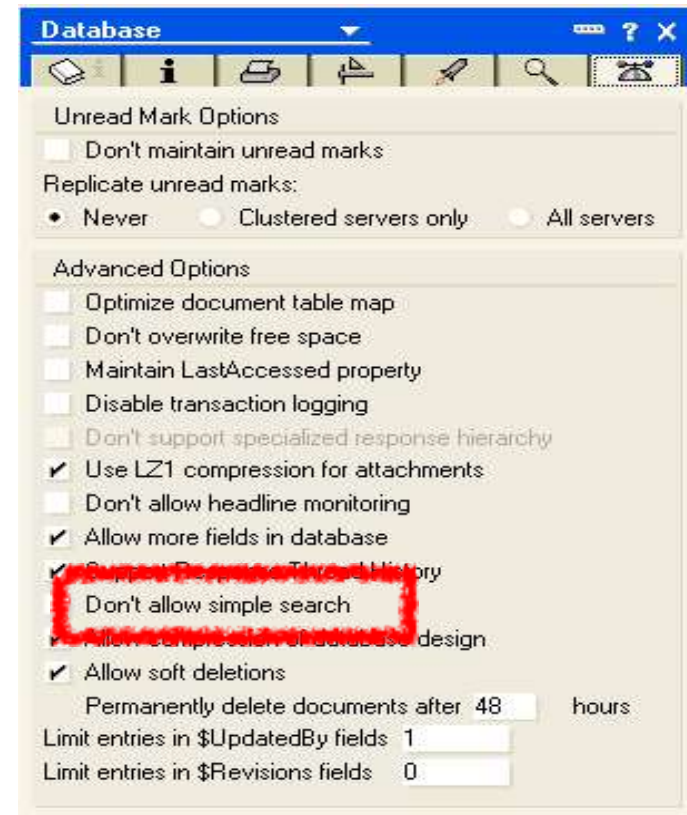
## Tip #17: Check your buffer pool

- The NSF buffer pool is automatically calculated by the Domino server
  - Based on 32/64 bit, amount of physical memory
- The Notes Indexing Facility operates in the buffer
  - Then writes/reads to disk if it needs to
- Check how much of the buffer is in use
  - Show Stat Database.database.b\*
- Over 95% is good
  - Much of the information needed is in memory
- 99.9% is bad...
  - Too many requests may be writing to disks
  - Server needs more buffer
- NSF\_Buffer\_Pool\_Size\_MB= to increase amount
  - Sametime server needs a small buffer



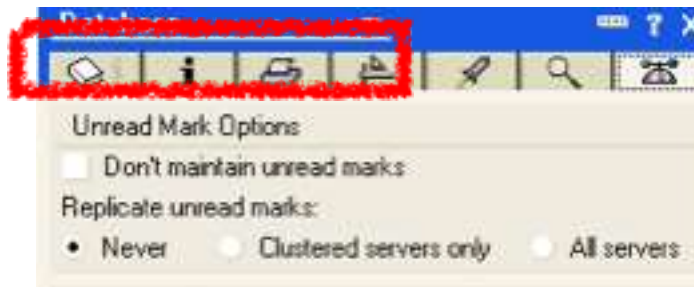
## Tip #18: Prevent simple searching

- Simple searching hurts a domino server
  - Searches a database that does not have an FTI
  - CPU intensive
- You can prevent simple searching now
- Database properties



## Tip #19: Do you need unread marks?

- All too many times
- Poor performing application servers
- All databases have unread marks maintained/replicating
- Is it needed?
  - Does the application benefit from it?
  - Do the users benefit from it?
- Turn it off!



## Tip #20: Separate View updates from FTIs

- If you have many applications
- Busy update task
  - View updates suffer as Full Text Updates are still in operation
- Separate the FTI update from the view update
  - FTI updates happen in their own memory thread
  - Performance improves
- Update\_Fulltext\_Thread=1

## Tip #21: Take Full text indexing out of Domino memory pool

- You can take the FTI thread out of the limited Domino update pool
- `ftg_use_sys_memory=1`
  - Full text thread now gets memory from the OS pool
  - Frees up domino system memory

## Tip #22: Don't want certain attachments indexed?

- You can exclude attachments from indexing at server level
  - `FT_Index_Ignore_Attachment_Types=*.EXT`
- Excluding attachment formats will improve indexing
- By default, the following are ignored:
  - .NSF
  - .NTF
  - .SYS
  - .PAG
  - .IMG
  - .WAV
  - .GIF
  - .JPG
  - .DLL
  - .TAR
  - .EXE
  - .ZIP
  - .AU
  - .MPG
  - .MOV

## Server Configuration Tips

## Tip #22: Cluster auxiliary port (ND8)

- What if the private NIC fails?
- You should have standard replication as a backup to cluster replication anyway
  - For a few reasons!
- `Server_Cluster_Auxiliary_Port=*`
  - Tells the cluster engine to failover to alternative port if default port is unavailable

## Tip #23: Cluster Work Queues

- Cluster performance is dependent on the work queue depth
  - Type “Sh stat replica” on the console
  - Look for cluster work queue depth statistics
- Work queue depth is critical to cluster performance

```
Replica.Cluster.WorkQueueDepth = 0  
Replica.Cluster.WorkQueueDepth.Avg = 0  
Replica.Cluster.WorkQueueDepth.Max = 8
```



## Tip #24: Clustered servers in connection docs

- Lotus Notes clients are cluster aware
- So are Lotus Domino servers!
- If you want full resilience in replication/routing
- When creating a connection document
  - Destination server field
  - Put in the cluster name of the server you want to connect to!

The screenshot shows the 'Server Connection' dialog box with the 'Basics' tab selected. The dialog has five tabs: Basics, Replication/Routing, Schedule, Comments, and Administration. The 'Basics' tab contains two columns of fields. The left column includes 'Connection type' (set to 'Local Area Network'), 'Source server' (set to 'SERVERNAME/Bluewave'), 'Source domain' (set to 'bluewave'), and 'Use the port(s)' (empty). The right column includes 'Usage priority' (set to 'Normal'), 'Destination server' (set to 'PUTCLUSTERNAMEHERE'), 'Destination domain' (set to 'bluewave'), and 'Optional network address' (empty). Each field has a dropdown arrow icon.

Server Connection	
Basics   Replication/Routing   Schedule   Comments   Administration	
<b>Basics</b>	
Connection type:	Local Area Network
Source server:	SERVERNAME/Bluewave
Source domain:	bluewave
Use the port(s):	
Usage priority:	Normal
Destination server:	PUTCLUSTERNAMEHERE
Destination domain:	bluewave
Optional network address:	

## Tip #25: Streaming cluster replication

- Came out with 8.0
  - Didn't work
- Was disabled in 8.0.1
  - `DEBUG_SCR_DISABLED=1`
- If you are running 8.0.2. FP1 or higher
  - Make sure that line is removed!
- SCR improves caching/clustering and data transfer

## Tip #26: Remove MIME conversions from log

- Have you ever seen this on your console?
- Message converted to MIME format....
- Annoying isn't it?
  - Happens all the time
- You only want to know when it doesn't work
- `Converter_log_level=10`
  - Only errors logged

## Tip #27: Database Icon management

- Get familiar with database redirects!
  - Moving a database
  - Deleting a database
  - Just create Redirect tool
- Very simple to use from the admin client
- You can point different people to different servers!
- These WILL become a part of your everyday admin life



## Tip #28: Pasting images into mail

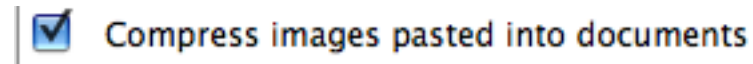
- Lotus Notes

From 8.5 on onwards, images pasted into emails are compressed!

Huge saving on disk space!

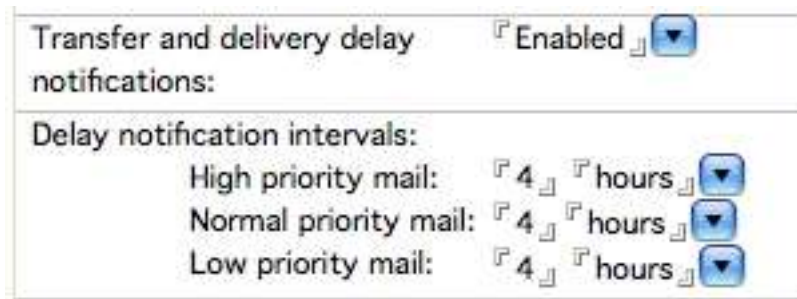
Did you know, a notes.ini setting has been available since 6.5.4?


OptimizeImagePasteSize=1






## Tip #29: Delayed email notifications

- Lotus Domino is used by really big companies
  - Still, typically no more than 6 hops MAX to get mail from sender to recipient
- Server failure causes NDR mail to sender
- What if its not your fault?
  - Comms line down
  - Other server down?
- What if the message is pending, waiting to get to the recipient
- You can warn the sender that the message is delayed!
- Configuration document



Transfer and delivery delay notifications: ☒ Enabled 

Delay notification intervals:

High priority mail:	<input type="text" value="4"/>	hours	
Normal priority mail:	<input type="text" value="4"/>	hours	
Low priority mail:	<input type="text" value="4"/>	hours	

## Tip #30: Disabling session information in log

- For very secure sites
  - Disable session information in log.nsf
  - Improves performance in server
  - LOG\_DISABLE\_SESSION\_INFO=1

## Tip #31: Log the IP address of users that access

- LOG\_SESSIONS=2 in the notes.ini of their server
- IP address logged for all users now
  - IP addresses come up on console
  - Stored in log.nsf

```
11/27/2009 02:42:15 AM Opened session for 'Doctor Notes/demo' (Release 8.5.1)  
SessionId 00021E3C Ip '192.168.1.33' 'Auth' 'C'
```



## Tip #32: Secure the ID Files of Your Servers

- The ID files for servers are usually created without a password
  - If captured, this can compromise security
- Place a password on the server.id file
  - Restart server command does not require password to be entered – the password is cached
  - Automatic fault recovery does not require password
- Don't hate me for saying this!

## Tip #33: Restart Server Delay

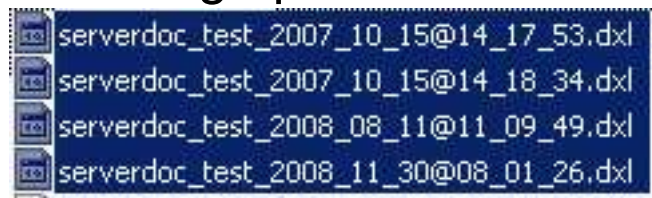
- Restart server command defaults to a 10-second delay
- Sometimes this is too short
  - Running additional tasks
    - Sametime
    - BlackBerry enterprise server
- Make it longer!
  - `SERVER_RESTART_DELAY=n`
    - N = value in seconds

## Tip #34: Want to list all database information?

- Sh Dir -xml >mydata.xml
  - Writes an xml file to the domino directory
  - All data in there
  - Open in browser/import into spreadsheet
- Or
- Julian Robichaux has a free tool
  - Will export all information from the “Files” tab to a csv file for you
  - Its free!
  - <http://www.nsftools.com/blog/blog-08-2008.htm#08-22-08>

## Tip #35: How can I tell what changed in the server doc?

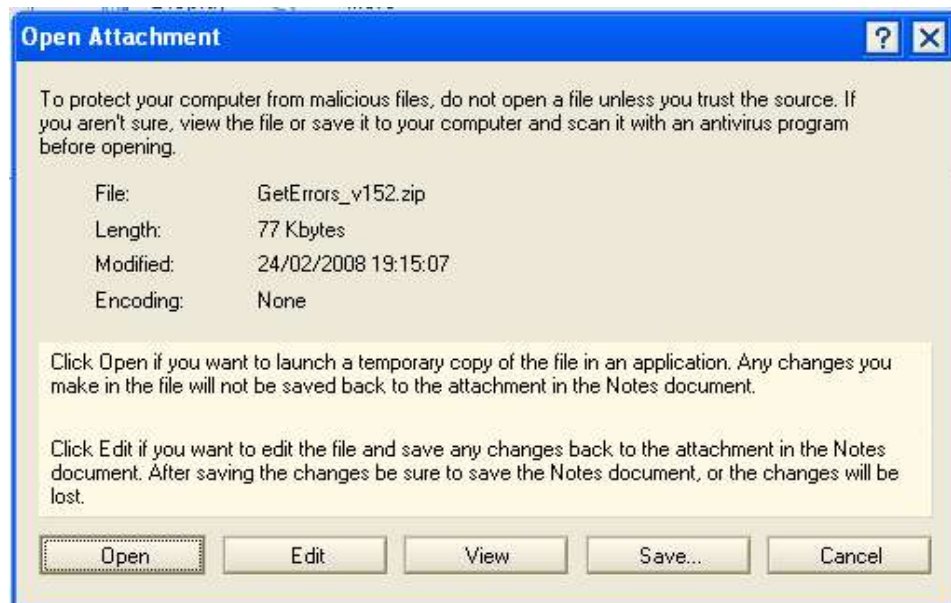
- Did you know that the Domino server records changes to the server document automatically?
- Every time you make a change, a new date/time stamped file is stored in the IBM TECHNICAL SUPPORT directory on the server
- DXL Files.. open them in a browser or import into another product
- Nice troubleshooting tip!



## Client configuration tips

## Tip #28: Change Attachment Handling on Client

- Notes client gives options with attachments
  - Users get confused
  - Too many options!



- Remove the options!
  - AttachmentActionDefault=1
  - Double-click on attachment opens attachment by default

## Tip #31: Make the Notes client smarter

- Cause you just can't do that to the users...
- The Notes client is aware that it has received mail...
- Tell it to replicate automatically if mail comes in
- Set location document
  - Mail addressing field to LOCAL THEN SERVER
- POLL\_REMOTE\_MAILFILE=1 in server

## Tip #39: RSS readers and Lotus Notes client

- The Lotus Notes client RSS reader...
  - No comment..
- One of its issues is you CANNOT import OPML files into the reader
  - Unlike just about every other RSS reader
- There is a file on your client called presetfeeds.opml
  - x:\Notes\framework\rcp\deploy\extras directory
- Close Notes
- Replace that file with yours
- Restart Notes
  - Subscribe to pre-sets
- Done



## Tip #40: Standardise Lotus Notes deployment

- Power of the workstation is the issue with Lotus Notes 8 standard
  - Too slow?
  - Too old?
- Nightmare of deploying different packages of client software
- Solution
  - Deploy the standard (full fat) version of Notes 8
  - On machines too slow
    - UseBasicNotes=1
  - This makes the basic (low fat) version load
- Use a policy to deploy this!

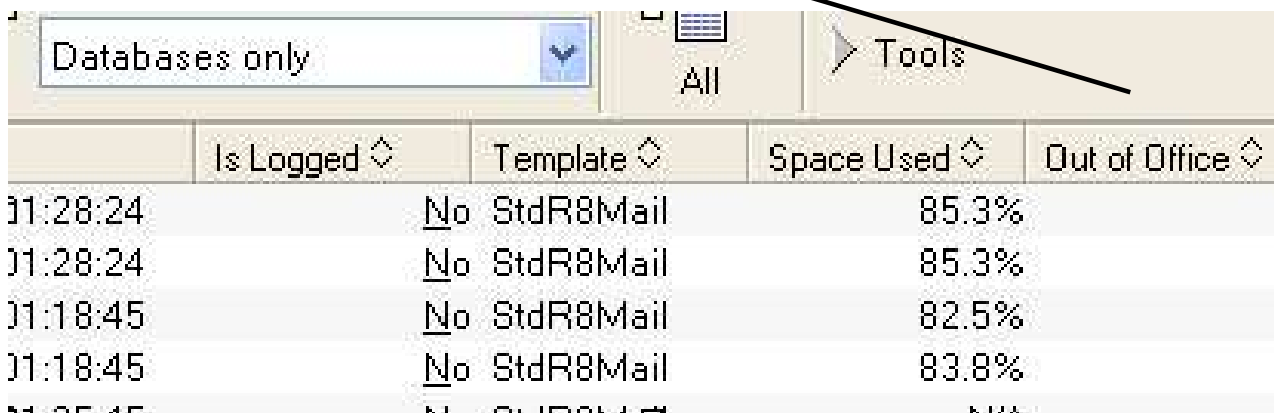
## Tip #48: Simple Archiving tip for local archives

- Enable archiving in your mail file
- Create a folder Archive
  - Must be Archive, not ARCHIVE or archive
- Now, when you drag a message into that folder
  - You will be prompted to archive the file immediately
  - Archiving will match the folder the message was in
- Please note - In no way do I recommend local archiving

## General Tips

## Tip #36: See Who Has OOO Enabled

- Two specific ways
  - Type in "TELL ROUTER O" on the console
- Admin client
  - Files tab



	Is Logged ◇	Template ◇	Space Used ◇	Out of Office ◇
11:28:24	No	StdR8Mail	85.3%	
11:28:24	No	StdR8Mail	85.3%	
11:18:45	No	StdR8Mail	82.5%	
11:18:45	No	StdR8Mail	83.8%	
11:05:45	No	StdR8Mail	83.8%	

## Tip #37: Quick Blackberry tip!

- Disclosure... I love this one!
- Want to ensure an email gets to a blackberry?
  - I never got that message....blah blah blah!
- At the START of your subject place <\$Confirm> in the line
- The unit will send you a confirmation receipt
- There are other tags you can use...
  - <\$Confirm,RemoveOnDelivery> is an example

## Tip #38: Get rid of all users with manager access to mail files

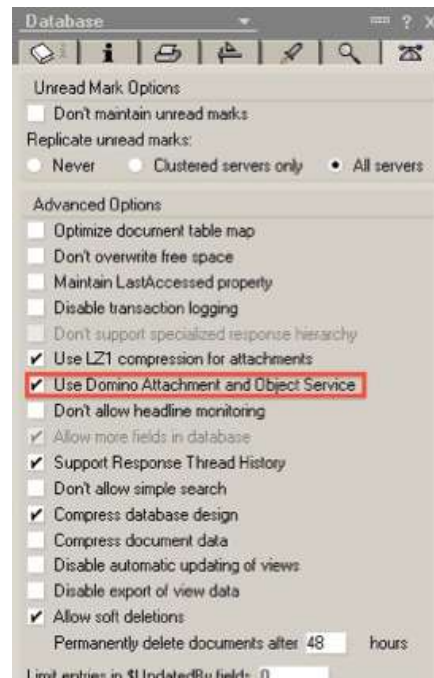
- Very common problem
  - User registered with manager access to mail file
- User can now go wild...(and they will)
  - Delete file
  - Encrypt file
  - Screw with design..
- Free tool!
- Checks for owner field in mail file and resets ACL to whatever you want
- Runs on server
- [pmooney.net/resources](http://pmooney.net/resources) page

## Tip #39: When upgrading - copy templates

- Did you know that the system databases have had the same replica id for years?
  - pubnames.ntf
  - admin4.ntf
  - most of the others
- It is a GOOD idea to create a new database copy of the templates before you plan start a domain upgrade
  - Prevents other copies of templates causing replication issues for you

## Tip #40: DAOS enabling new databases

- Most specifically.. .Mail
- Enable DAOS in the mail template database
- All new databases will have have the property enabled





## Tip #41: DAOS and compression

- DAOS creates one READ ONLY file for every attachment
- Multiple references to a single attachment
- UNLESS>>>>>
- You are using various versions of compression
- If one mail file is using LZ1 compressoin and another is not
  - and they are referenceing the same attachment
  - There will be two versions of the .NLO kept
- Ensure all mail files utilise the same compression
- Load compact -c -ZU

## Tip #42: DAOS and replication in 851

- If you enable DAOS and server to server replicate
- Even clusters
- Replication will only send an attachment if it doesn't already exist on the opposing server
- Massive cutdown on replication traffic

## Tip #43: 851 and extension tasks

- Are you running 851 server?
- Are you running any additional external tasks
  - AV software
  - third party extensions?
- 851 has an improved logging engine
  - Helps performance
- Extensions and the new feature are not getting along
- Add this line to notes.ini
  - `DISABLE_LOG_DBGROUP=1`

## Tip #44: Run your Lotus Domino server in the Java console

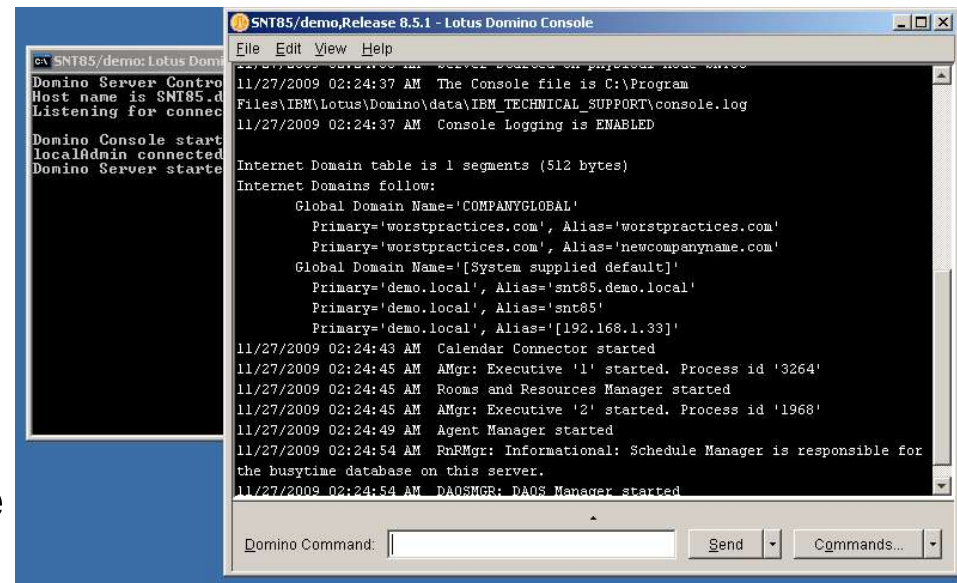
- Folks.. its time to do it
- Move your domino server into the server controller and java console.
- Stop your domino server
- Launch REGEDIT
- Go to
  - HKEY\_LOCAL\_MACHINE\SYSTEM\CurrentControlSet\Services\Lotus Domino Server (LotusDominoData)
- Modify the ImagePath key
- Change to
  - "D:\Lotus\Domino\ntservice.exe" "=D:\Lotus\Domino\notes.ini" -jc



Name	Type	Data
(Default)	REG_SZ	(value not set)
DisplayName	REG_SZ	Lotus Domino Server (C:\Program Files\IBM\Lotus\DominoData)
ErrorControl	REG_DWORD	0x00000000 (0)
ImagePath	REG_EXPAND_SZ	"C:\Program Files\IBM\Lotus\Domino\ntservice.exe" "=C:\Program Files\IBM\Lotus\Domino\notes.ini" -jc
ObjectName	REG_SZ	LocalSystem
Start	REG_DWORD	0x00000002 (2)
Type	REG_DWORD	0x00000110 (272)

## Tip #44: Run your Lotus Domino server in the Java console

- Start the service again...and the server controller and java console launch
- Now you can use the java controller from your admin client
- From your notes\ directory launch jconsole.exe
  - Enter your user name
  - Enter your internet password
- You can now do much more
  - Server commands
  - Multi-server commands
  - Stop/start server
  - Batch commands



## Tip #45: Release Notes

- Read them
- They make your life easier!
- 1/2 hour reading and you are up to date

## Tip #46: Want to send a command to a group of servers?

- 1 - Create a server group in your personal address book
  - OR the Domino directory
- 2 - Go to your admin console
- 3 - Type in your command
- 4 - Click on the arrow beside the send button
- 5 - Click on Customise

Server list group : AllTheServers

Basics | Comments | Administration

**Basics**

Group name: AllTheServers

Group type: Servers only

Category:

Description:

Mail Domain:

Internet Address:

Auto Populate Method: None

Members:

- AMailServer/demo
- AnApplicationServer/demo
- HeyLook..another..Server/demo
- Server1/demo
- Server2/demo
- SMTPServer/demo
- SNT85/demo

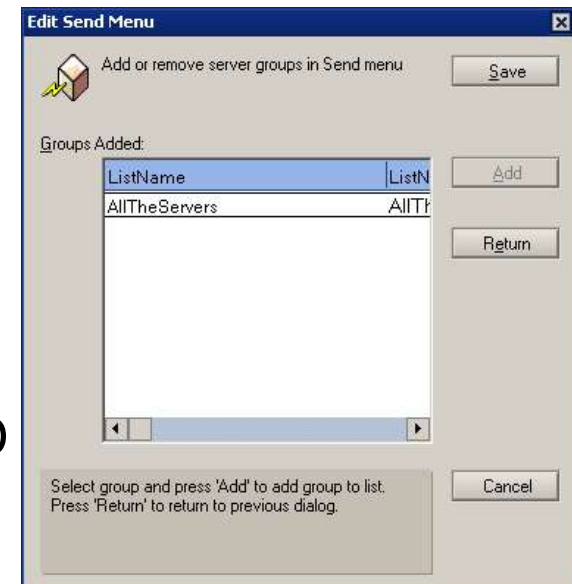
11:39:35 AM Admin Process: Searching Administration Requests database  
 11:40:35 AM Admin Process: Searching Administration Requests database

nd: Restart task router

Customize...  
 Select Servers...  
 Summary Response Only

## Tip #46: Want to send a command to a group of servers?

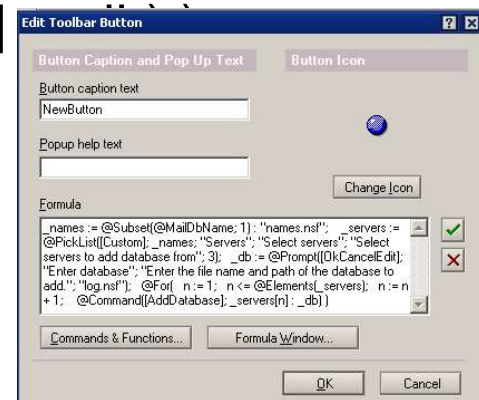
- 6 - Click on add private or add public to choose your group
- 7 - Click on ADD
- 8 - Click on Save
- 9 - Now click on the arrow beside SEND
  - Your group is now available
  - Click on it and your command is sent to all servers





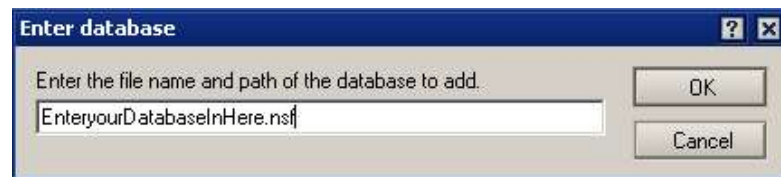
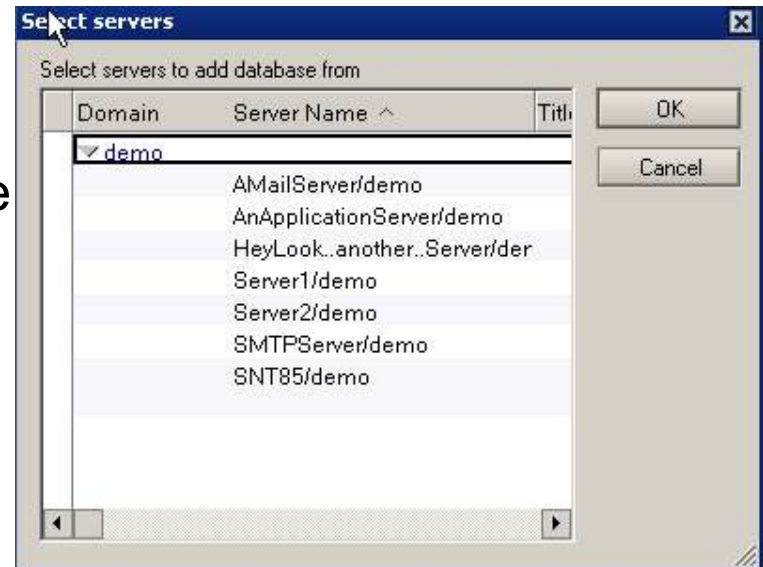
## Tip #47: Adding same db from multiple servers to workspace

- Create a new button on your toolbar.
- Copy in this text
- `_names := @Subset(@MailDbName; 1) : "names.nsf";  
_servers := @PickList([Custom]; _names; "Servers"; "Select  
servers"; "Select servers to add database from"; 3); _db :=  
@Prompt([OkCancelEdit]; "Enter database"; "Enter the file  
name and path of the database to add."; "log.nsf"); @For  
( n := 1; n <= @Elements(_servers); n := n + 1;  
@Command([AddDatabase]; _servers[n]`



## Tip #47: Adding same db from multiple servers to workspace

- Now.. click on it
- All the databases with that name will be added to the workspace
- (hopefully they stack ;) )
- Thank Thomas Bahn for this!
  - <http://www.assono.de/blog/>



## Tip #48: Transaction logging and quotas

- Do you use transaction logging?
- Do you use quotas?
- Change your quota enforcement default setting
  - Server document/Transaction logging
- CHECK SPACE USED IN FILE WHEN ADDING A NOTE
- Now the router will base quota on space used, not file size
  - User doesn't have to compact
  - User just has to delete files to get the mails if over quota!
- Administrator can manage scheduled compacting

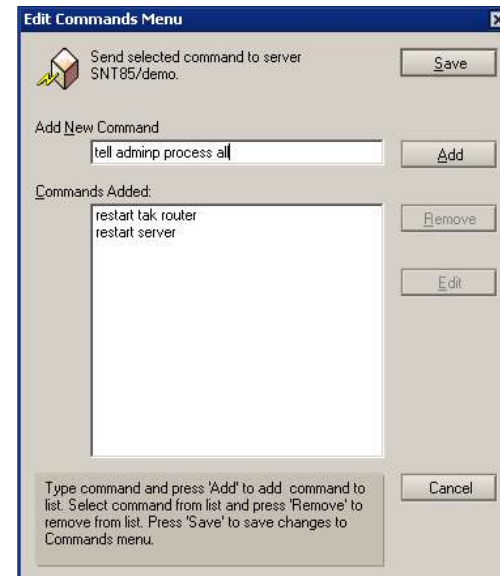
Basics	
Transactional logging:	<input checked="" type="checkbox"/> Enabled ▾
Log path:	<input type="text" value="c:\ltn"/>
Logging style:	<input checked="" type="checkbox"/> Linear ▾
Use all available space on log device:	<input type="radio"/> Yes <input checked="" type="radio"/> No
Maximum log space:	<input type="text" value="500"/> MB
Automatic fixup of corrupt databases:	<input checked="" type="checkbox"/> Enabled ▾
Runtime/Restart performance:	<input checked="" type="checkbox"/> Favor runtime ▾

Quotas	
Quota enforcement:	<input checked="" type="checkbox"/> Check space used in file when adding a note ▾

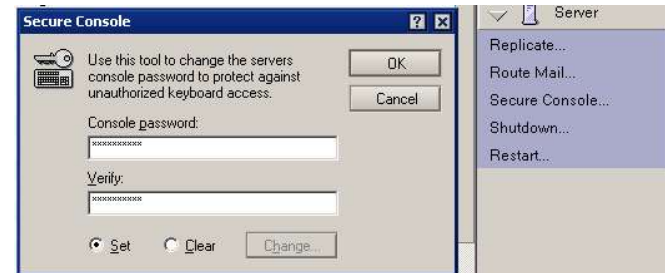
## Tip #49: Save your custom commands

- Admin client - save your commands
- Console - custom commands button
- Add the commands to the list
- Click on SAVE
- Now commands are saved on the list



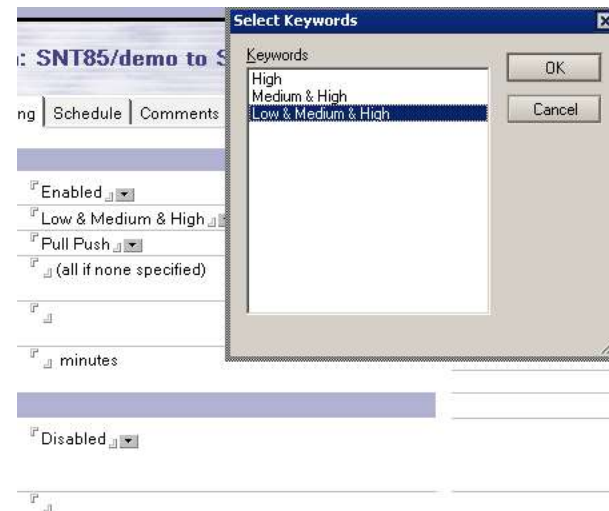
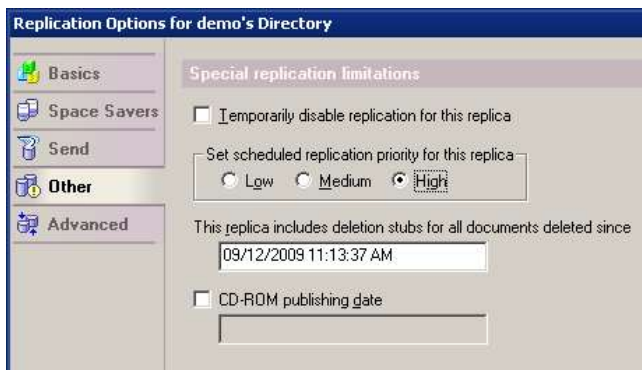
## Tip #50: Set secure and clear

- Sometimes even the old commands are useful
- On the console, type in
  - Set secure [password]
- Or from the admin client
  - secure the console
- Console will still accept  
“sh” commands or commands that do not affect tasks



## Tip #51: Use priority for replication

- Sick of complicated replication schedules?
- Create a replication schedule for high priority database
  - Then create a slower one for all database (H,M,L)
- Then you can define how an app replications by setting priority



## Tip #52: Domino Domain Monitor (DDM) keeps you safe

- Enable DDM
- For example
  - Have DDM tell you when anonymous gets added to a database over a certain level
  - Have DDM tell you not only that there is a problem, but suggests how to fix it!
  - Have DDM bring you directly to the problem
- Monitoring software makes your life easier

## Tip #53: Enabling the OOO service?

- Lovely new feature in ND8.x
- Want to do it properly?
- Follow these steps
  - Disable everyone's existing OOO agents
  - Load the service
  - Re-enable the OOO agents
- Prevents OOO issues post configuration change



## Tip #54: Router compaction?

- Need to compact the router during the day?
- Tell router compact
  - Runs at 4am anyway
- Router task will compact on the fly
  - Useful in case of mail.box issues

## Tip #55: DAOS is not just for mail

- DAOS is database level
- A notes mail file is a database
- An application is a database
- A database is a database!
- Do you have applications with large attachment volumes
  - Implement DAOS!

## Tip #56: Playing with widget catalogs?

- Many sites are starting to deploy basic widgets
- Building a widget catalog is easy
- There is a disabled agent in the widgetcatalog
  - Toolsweeper
  - Scans widgets to ensure that the correct information is in there
- Enable it!

## Tip #57: Make a notes.ini change.. not working?

- Very.Common.Problem
  - Add a line to the notes.ini of a server?
  - Change doesn't occur?
- There must always be a blank line at the end of notes.ini
  - Last line is ignored
- Beat yourself with a stick for manually editing the notes.ini
  - Use configuration documents
  - Much better/safer

## Tip #58: Don't understand the notes.ini on server?

- Have your notes.ini file organised for you
- Lotus Notes toolbox has a free tool
  - <http://www.Intoolbox.com/en/online-tools/notes-ini-analyzer.html>

### notes.ini Analyzer

Welcome visitor,

the notes.ini Analyzer will take a notes.ini file and re-format it, dividing it into sections and cleaning it up to make it easier to use/read. It can also analyse your ini file and make recommendations to configuration changes to enhance areas such as performance, security and give you pointers on ways to clean up and improve the file. If you like you the notes.ini Analyzer can use the notes.ini Reference to explain you all known entrys in your notes.ini. Simply use the \"Choose File!\" button, select the options you wish and press the button. When you're happy with the result, you just cut and paste the output into a text editor and save it to your new notes.ini file. Its very simple.

1. Choose your notes.ini:

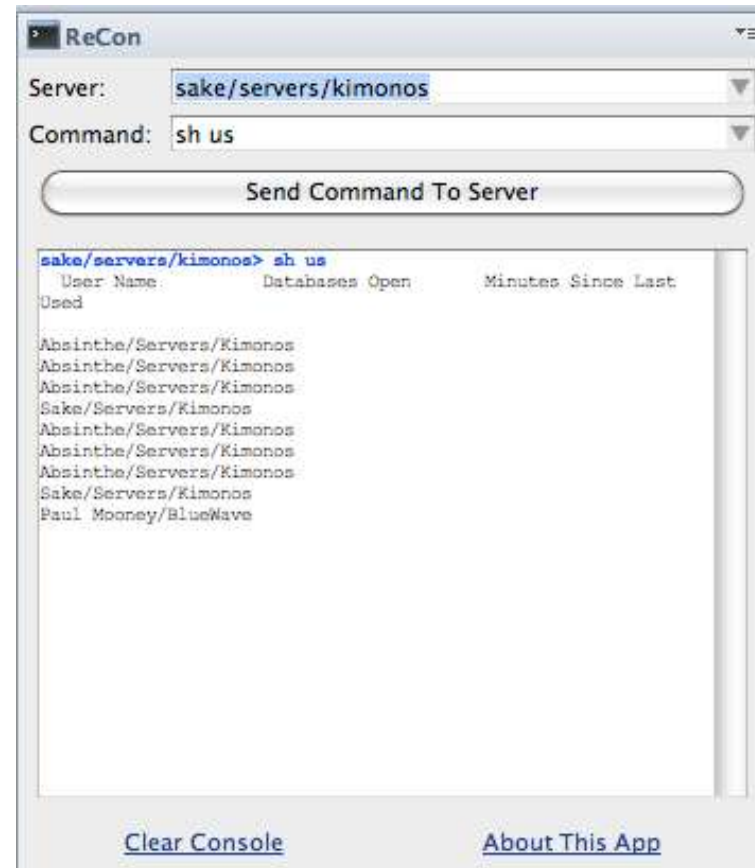
Choose the available options:

## Tip #59: Traveler issues?

- Easy tip for Lotus Traveler
  - If a specific user is having issues
- Tell Traveler reset \* username
  - Config reset for user
- Tell Traveler delete \* username
  - User account deleted
  - “\*” indicates the model device

## Tip #60: New way to open an admin console

- Recon!
- Thanks to Julian Robichaux
- Server console widget



## Tip #61: Send your crash reports to IBM

- If your Domino server crashes
  - You can send your information to IBM
- Want the server to do that automatically?
  - CRASH\_SENDTOIBM=1 in the notes.ini



## Tip #62: Your service

- Your service is key
- Protect it

## Thank you...

Paul Mooney

[pmooney@pmooney.net](mailto:pmooney@pmooney.net)

[www.twitter.com/pmooney.net](http://www.twitter.com/pmooney.net)

# Legal Disclaimer

© IBM Corporation 2009. All Rights Reserved.

The information contained in this publication is provided for informational purposes only. While efforts were made to verify the completeness and accuracy of the information contained in this publication, it is provided AS IS without warranty of any kind, express or implied. In addition, this information is based on IBM's current product plans and strategy, which are subject to change by IBM without notice. IBM shall not be responsible for any damages arising out of the use of, or otherwise related to, this publication or any other materials. Nothing contained in this publication is intended to, nor shall have the effect of, creating any warranties or representations from IBM or its suppliers or licensors, or altering the terms and conditions of the applicable license agreement governing the use of IBM's software.

References in this presentation to IBM products, programs, or services do not imply that they will be available in all countries in which IBM operates. Product release dates and/or capabilities referenced in this presentation may change at any time at IBM's sole discretion based on market opportunities or other factors, and are not intended to be a commitment to future product or feature availability in any way. Nothing contained in these materials is intended to, nor shall have the effect of, stating or implying that any activities undertaken by you will result in any specific sales, revenue growth or other results.

If the text contains performance statistics or references to benchmarks, insert the following language; otherwise delete:

Performance is based on measurements and projections using standard IBM benchmarks in a controlled environment. The actual throughput or performance that any user will experience will vary depending upon many factors, including considerations such as the amount of multiprogramming in the user's job stream, the I/O configuration, the storage configuration, and the workload processed. Therefore, no assurance can be given that an individual user will achieve results similar to those stated here.

If the text includes any customer examples, please confirm we have prior written approval from such customer and insert the following language; otherwise delete:

All customer examples described are presented as illustrations of how those customers have used IBM products and the results they may have achieved. Actual environmental costs and performance characteristics may vary by customer.

Please review text for proper trademark attribution of IBM products. At first use, each product name must be the full name and include appropriate trademark symbols (e.g., IBM Lotus® Sametime® Unyle™). Subsequent references can drop "IBM" but should include the proper branding (e.g., Lotus Sametime Gateway, or WebSphere Application Server). Please refer to <http://www.ibm.com/legal/copytrade.shtml> for guidance on which trademarks require the ® or ™ symbol. Do not use abbreviations for IBM product names in your presentation. All product names must be used as adjectives rather than nouns. Please list all of the trademarks that you use in your presentation as follows; delete any not included in your presentation.

IBM, the IBM logo, Lotus, Lotus Notes, Notes, Domino, Quickr, Sametime, WebSphere, UC2, PartnerWorld and Lotusphere are trademarks of International Business Machines Corporation in the United States, other countries, or both. Unyle is a trademark of WebDialogs, Inc., in the United States, other countries, or both.

If you reference Adobe® in the text, please mark the first use and include the following; otherwise delete:

Adobe, the Adobe logo, PostScript, and the PostScript logo are either registered trademarks or trademarks of Adobe Systems Incorporated in the United States, and/or other countries.

If you reference Java™ in the text, please mark the first use and include the following; otherwise delete:

Java and all Java-based trademarks are trademarks of Sun Microsystems, Inc. in the United States, other countries, or both.

If you reference Microsoft® and/or Windows® in the text, please mark the first use and include the following, as applicable; otherwise delete:

Microsoft and Windows are trademarks of Microsoft Corporation in the United States, other countries, or both.

If you reference Intel® and/or any of the following Intel products in the text, please mark the first use and include those that you use as follows; otherwise delete:

Intel, Intel Centrino, Celeron, Intel Xeon, Intel SpeedStep, Itanium, and Pentium are trademarks or registered trademarks of Intel Corporation or its subsidiaries in the United States and other countries.

If you reference UNIX® in the text, please mark the first use and include the following; otherwise delete:

UNIX is a registered trademark of The Open Group in the United States and other countries.

If you reference Linux® in your presentation, please mark the first use and include the following; otherwise delete:

Linux is a registered trademark of Linus Torvalds in the United States, other countries, or both.

Other company, product or service names may be trademarks or service marks of others.

If the text graphics include screenshots, no actual IBM employee names may be used (even your own); if your screenshots include fictitious company names (e.g., Renovations, Zeta Bank, Acme) please update and insert the following; otherwise delete:

All references to [insert fictitious company name] refer to a fictitious company and are used for illustration purposes only.